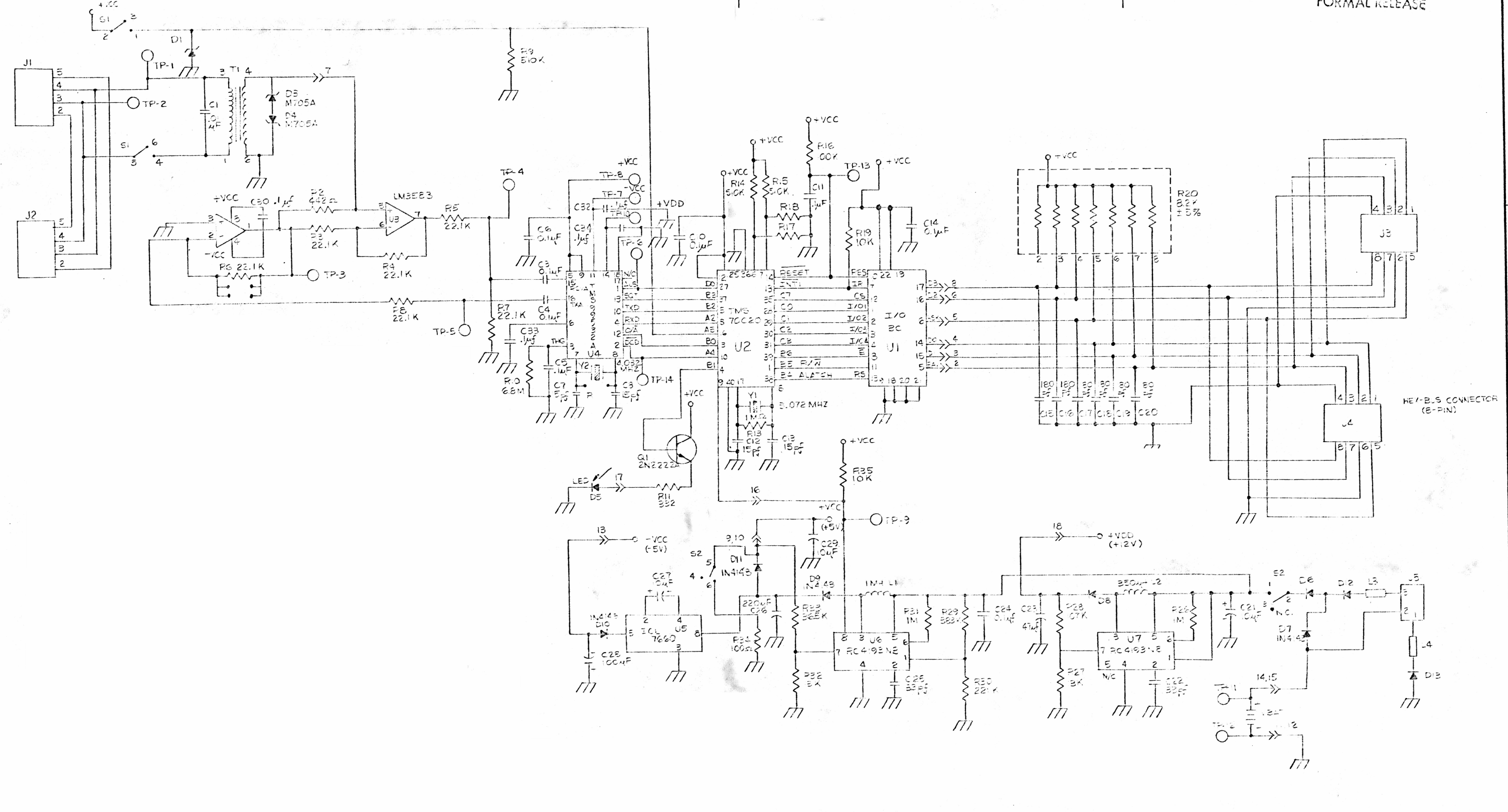


NOTES UNLESS OTHERWISE SPECIFIED:

REVISIONS				REVISIONS			
REV	DESCRIPTION	DATE	APVD	REV	DESCRIPTION	DATE	APVD

FORMAL RELEASE



ITEM NO	PART NUMBER	DESCRIPTION	MATERIAL	REMARKS

DIMENSION IDENT NUMBER USED      NOT USED	PARTS LIST DATE: 12/4/83 DESIGNED BY: [Signature] CHECKED BY: [Signature] DATE: 11/1/84 REVISED BY: [Signature] DATE: 11/1/84	UNLESS OTHERWISE SPECIFIED: • DIMENSIONS ARE IN MILLIMETERS • TOLERANCES UNLESS STATED: 2 PLACE DECIMALS ± MM 1 PLACE DECIMALS ± MM • DIMENSIONS IN PARENTHESES WITH A MAXIMUM ± 0.15	TEXAS INSTRUMENTS INCORPORATED CUSTOMER PRODUCT GROUP EASTRICH, TEXAS
			SCHEMATIC, PROD. 634
			D 036752

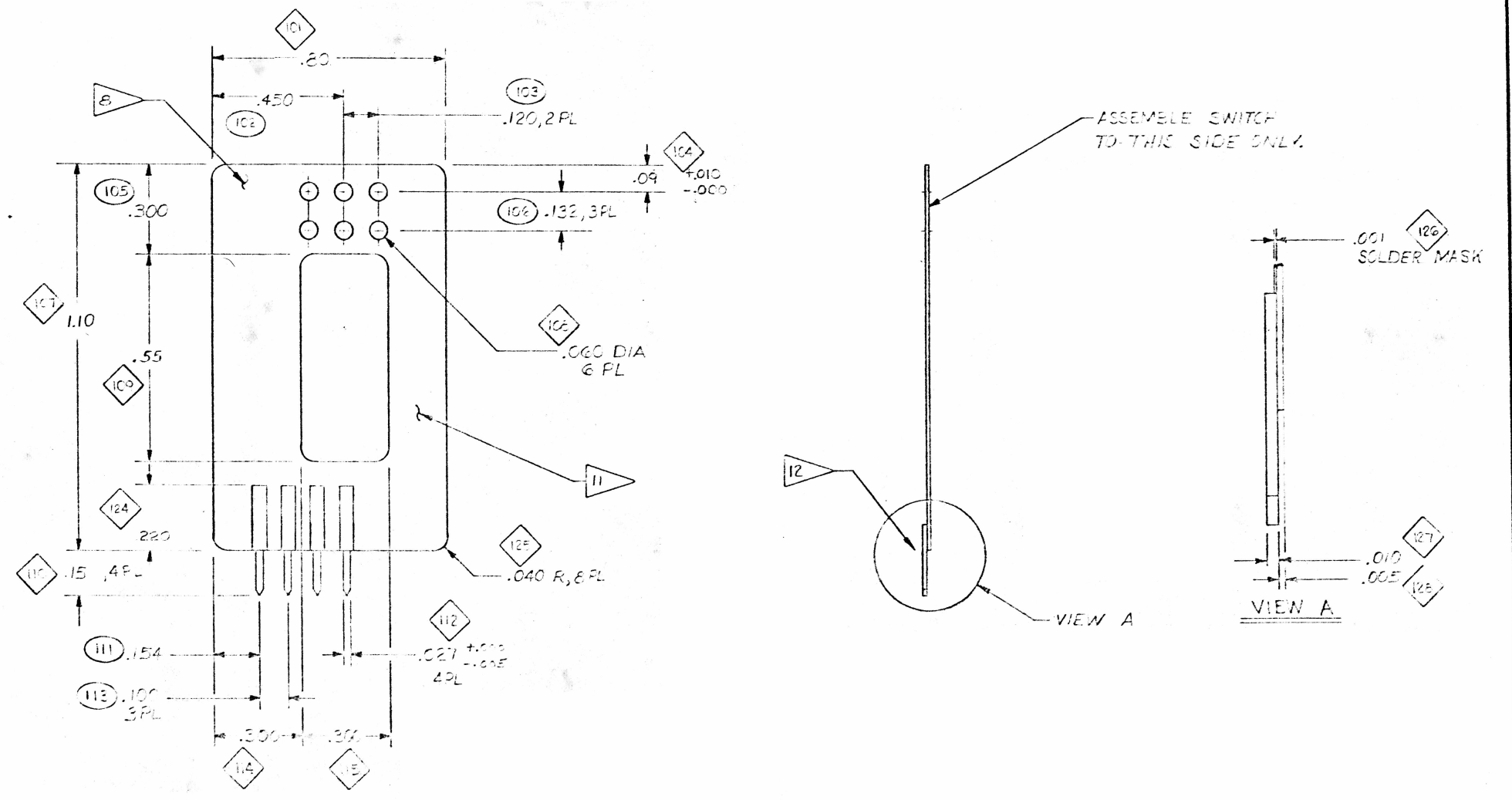
A

A

NOTES: UNLESS OTHERWISE SPECIFIED

1. CIRCUIT TO BE .005 INCH THICK KAPTON FILM. ELECTRICAL GRADE WITH 1.0 OZ. ELECTRO DEPOSITED COPPER CONDUCTOR WHICH WILL MEET OR EXCEED .160 INCH MULLEN TEST.
2. ARTWORK FOR CONDUCTOR PATTERN AND TOOLING HOLES SHALL BE SUPPLIED BY TEXAS INSTRUMENTS. ARTWORK SHALL BE REGISTERED TO TOOLING HOLES WITHIN .005 DIA. TRUE POSITION.
3. CIRCUITRY SHALL BE FREE OF STAINS, CHEMICAL RESIDUE, FINGER PRINTS, OR AREAS OF EXCESSIVE TARNISH.
4. CONDUCTOR PATTERN SHALL BE PLATED WITH A MINIMUM OF 800 MICRO INCHES AND A MAXIMUM OF 1200 MICRO INCHES OF 60-40 TIN LEADS.
5. PEEL STRENGTH FOR ANY CIRCUITRY ETCH SHALL BE 6.0 POUNDS PER INCH MINIMUM PULLING COPPER ETCH PERPENDICULAR TO THE FLAT WEB SUBSTRATE.
6. MINIMUM CONDUCTOR WIDTH SHALL BE .014 AND MINIMUM SPACING BETWEEN CONDUCTORS SHALL BE .014.
7. ALL SLITS SHALL BE CUT INTO RELIEF HOLES. AREA INDICATED WILL CARRY VENDOR'S LOGO.
8. NUMBERS LOCATED IN ○ AND ◇ SHALL BE USED FOR DIMENSION IDENTIFICATION ONLY.
9. ALL DIMENSIONS IN INCHES.
11. CIRCUIT SIDE
12. CONTACT MATERIAL: .0003 +.0002-.0000 TIN PLATED COPPER. CONTACTS (AMP #66997-2) SHALL BE CRIMPED INTO FILM.
13. CONDUCTIVE MATERIAL TO CARRY 1.5 AMP ±.5 -0
14. CONDUCTIVE MATERIAL TO HAVE RESISTIVITY OF .05 OHMS/INCH ±.0200 -.0499.
15. SOLDER MASK SHALL BE SCREENED ON CONDUCTIVE SIDE USING W.R. GRACE SPR-159.5 OR APPROVED EQUIVALENT. COLOR TO BE GREEN.
16. QUALIFIED VENDORS FOR THIS PART ARE: S-B, DSHL

REV. 1056773				REV. 1056773			
REV.	DESCRIPTION	DATE	APVD	REV.	DESCRIPTION	DATE	APVD
A	NO ECH. <i>Carroll</i> 10-14-83 (1) RELOCATED VIEW A, (2) DIM 104 TOL INC +.010 - .000, (3) ADDED MATR # 64 AT ITEM 1, (4) NOTE #12 WAS CONTACT MATERIAL ±.0003 +.0002-.0000 TIN PLATED COPPER.				FORMAL RELEASE		
E	ECH 103 30 <i>Sam Brown</i> 3-7-84 (1) DIM 124 WAS .10, (2) ADDED NOTE 16.	3/7/84					



2	1056773-0101	THIS DWG AS SHOWN	KAPTON FILM
1	1056773-01XX	BASIC PART CONFIGURATION	

ITEM NO.	PART NUMBER	DESCRIPTION	MATERIAL	REMARKS

DIMENSION IDENT NUMBER		PARTS LIST	
USED	NOT USED	DATE	DESCRIPTION
		9-9-83	Carroll
		9-7-83	Carroll
		10/1/83	Carroll
		11/2/83	Carroll
		12/1/83	Carroll
		1/1/84	Carroll
		3/7/84	Sam Brown

TEXAS INSTRUMENTS INCORPORATED COMPUTER PRODUCTS GROUP Lubbock, Texas	
FILM, FLEX (ON-OFF SWITCH) PRODUCT # 634	
Dwg No: 1056773 Date: 3/1/84	Part No: 1056773 Rev: 1

D  
C  
B  
A

D  
C  
B  
A